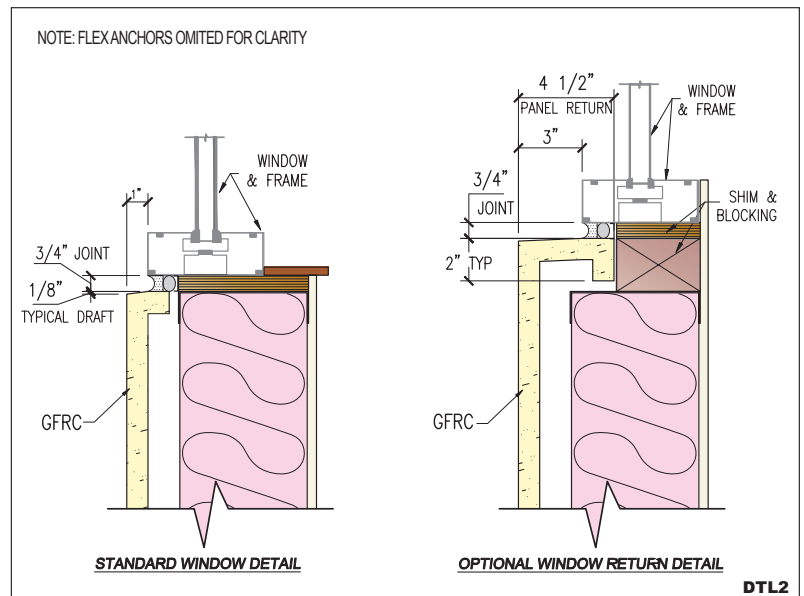
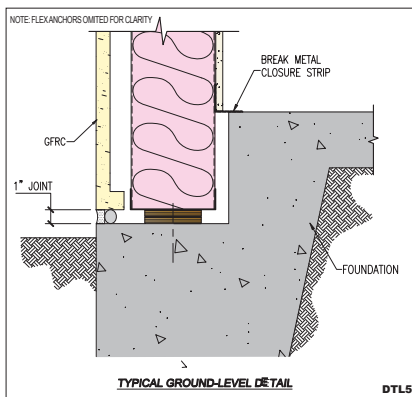
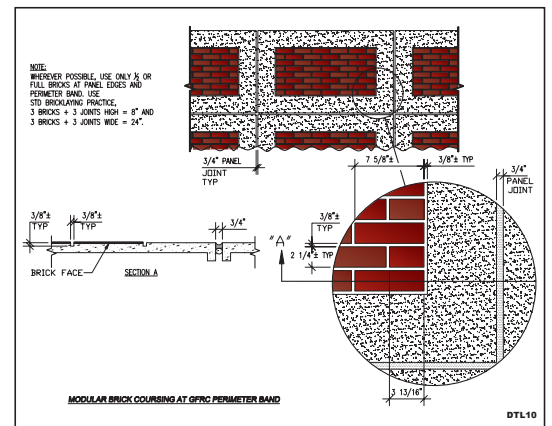
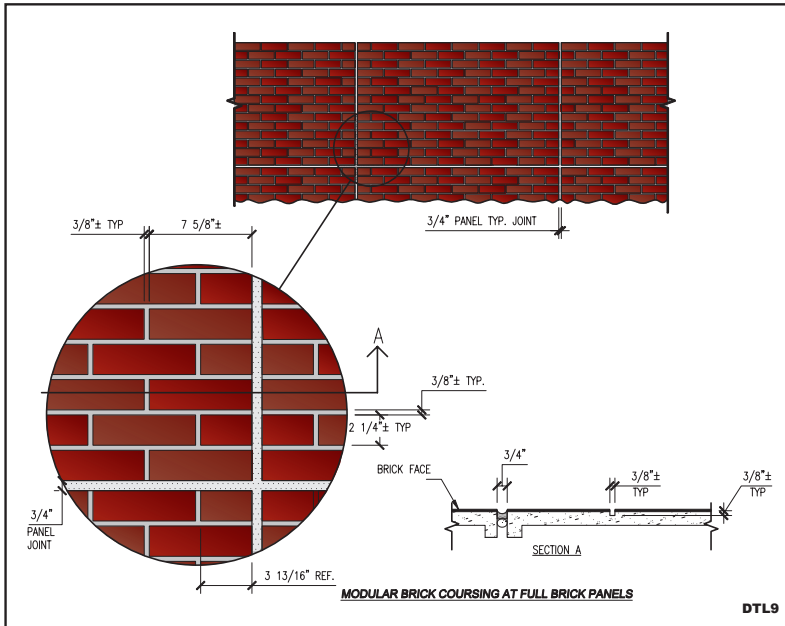


DETAILS FOR GFRC CLADDING PANELS

The following details are a guide to GFRC cladding. They are intended as a general guide only and since each project is unique, the exact details will vary from project to project.

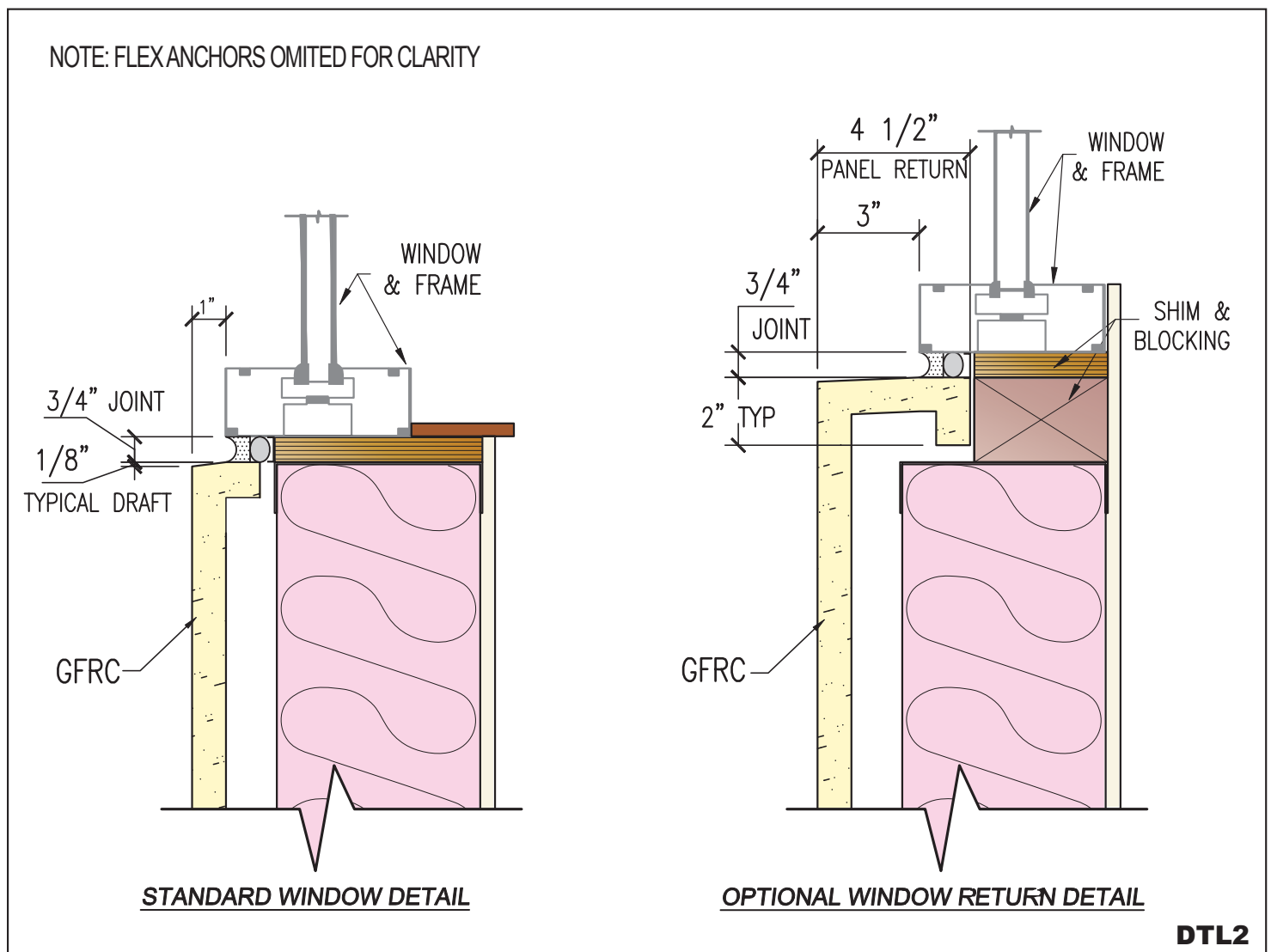


GFRCL Window Detail

The window should bear on the metal stud frame, not on the GFRCL. Allow room in the design for shims and blocking.

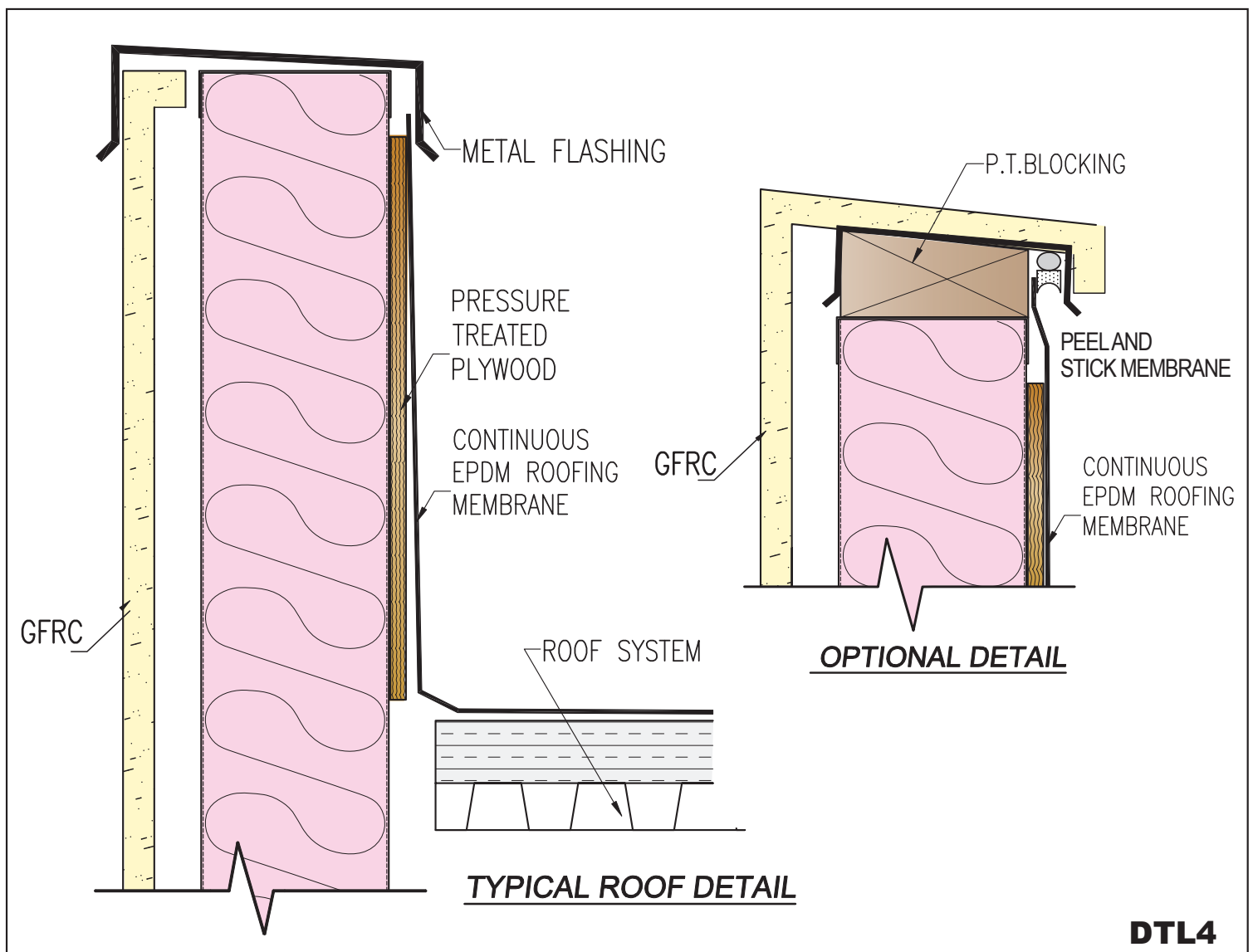
A peel and stick or metal flashing should be included in the design.

To download CAD drawing of this detail go to the CAD file section of the web-site.



GFRCL Cladding Panels - Parapet Detail

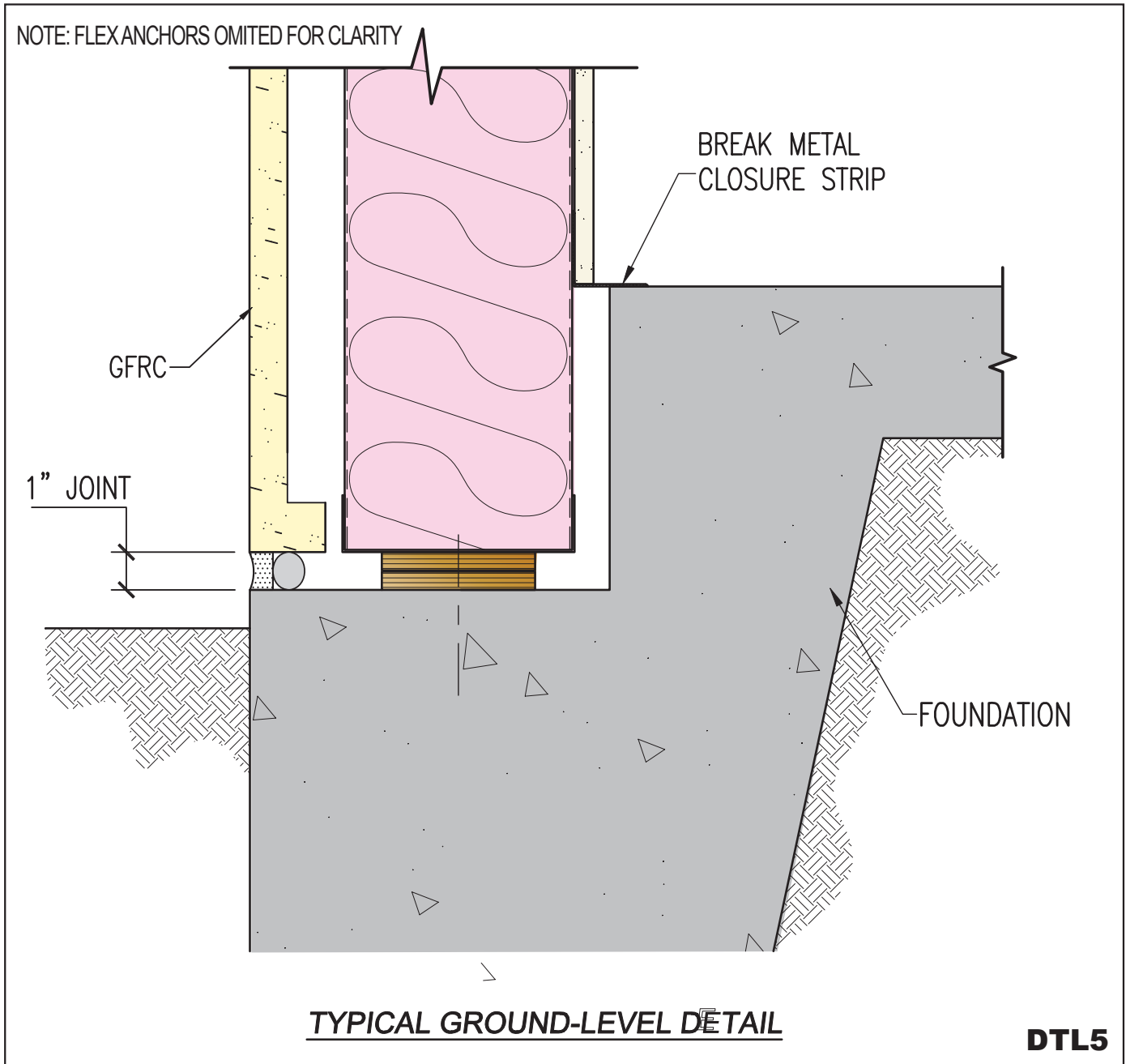
Typical details for GFRCL cladding panels. Parapet can be capped with a metal flashing cap or the GFRCL can wrap the top of the parapet. When the GFRCL wraps the parapet cap, the detail should include a metal membrane or other water barrier.

**DTL4**



GFRC Cladding Panel: Ground Level Detail

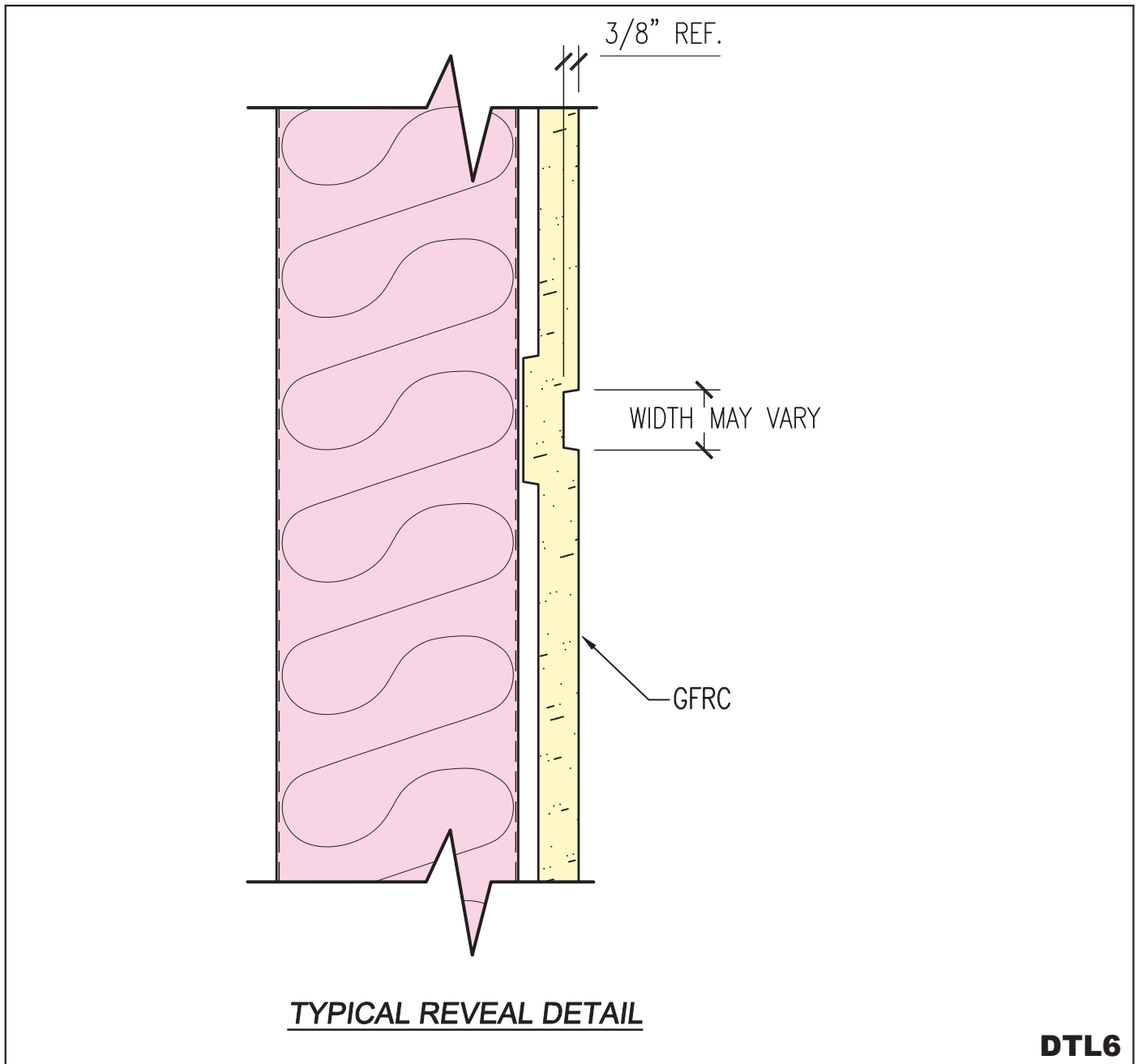
Panels may set directly on the slab or on a shelf. Allow room for shims to account for variations in the foundation.





GFRCL Cladding Panel: Reveal

A reveal in GFRCL cladding panel. The main use of reveals is to create shadow lines and demarcate the buildings cladding. Reveals are also referred to as a demarcation, rustication or false point.





Profiles and Projections on GFRC Panels

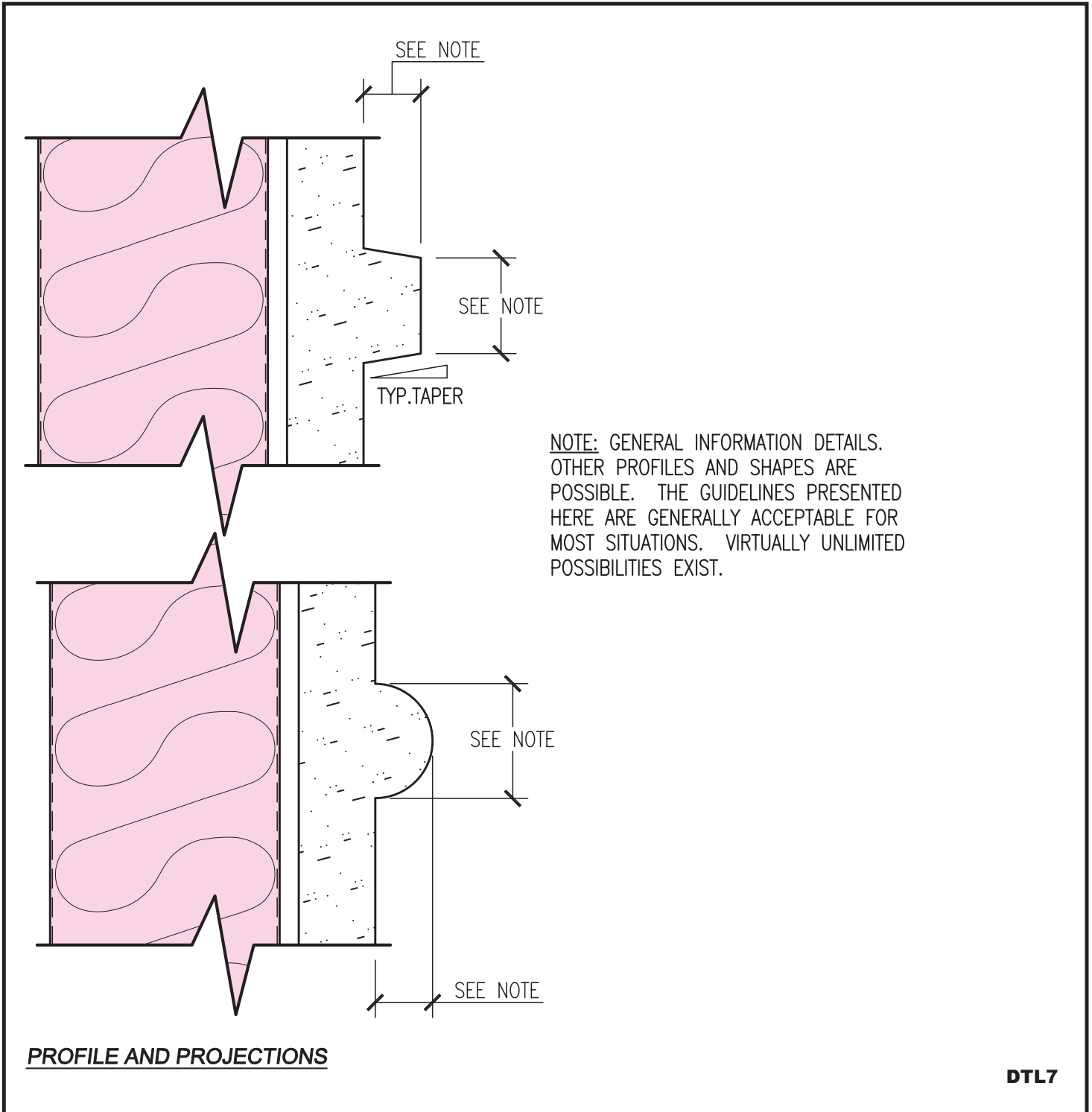
- Bullnose profiles and projection in GFRC panes can vary in size, shape and projection.
- Shapes may be vertical, horizontal, curved or any combination of these.
- Projections in GFRC panels can express the planning module or structural rhythm.
- Projections in GFRC cladding can be used where there are changes in color or texture of a GFRC panel.
- Projections can be used to provide drips in order to protect openings or control water flow on GFRC cladding panels.
- Change the building's visual scale.
- Projections in GFRC panels can emphasize floor lines, roof lines or ceiling lines.

Questions?

Call us we are here to help.



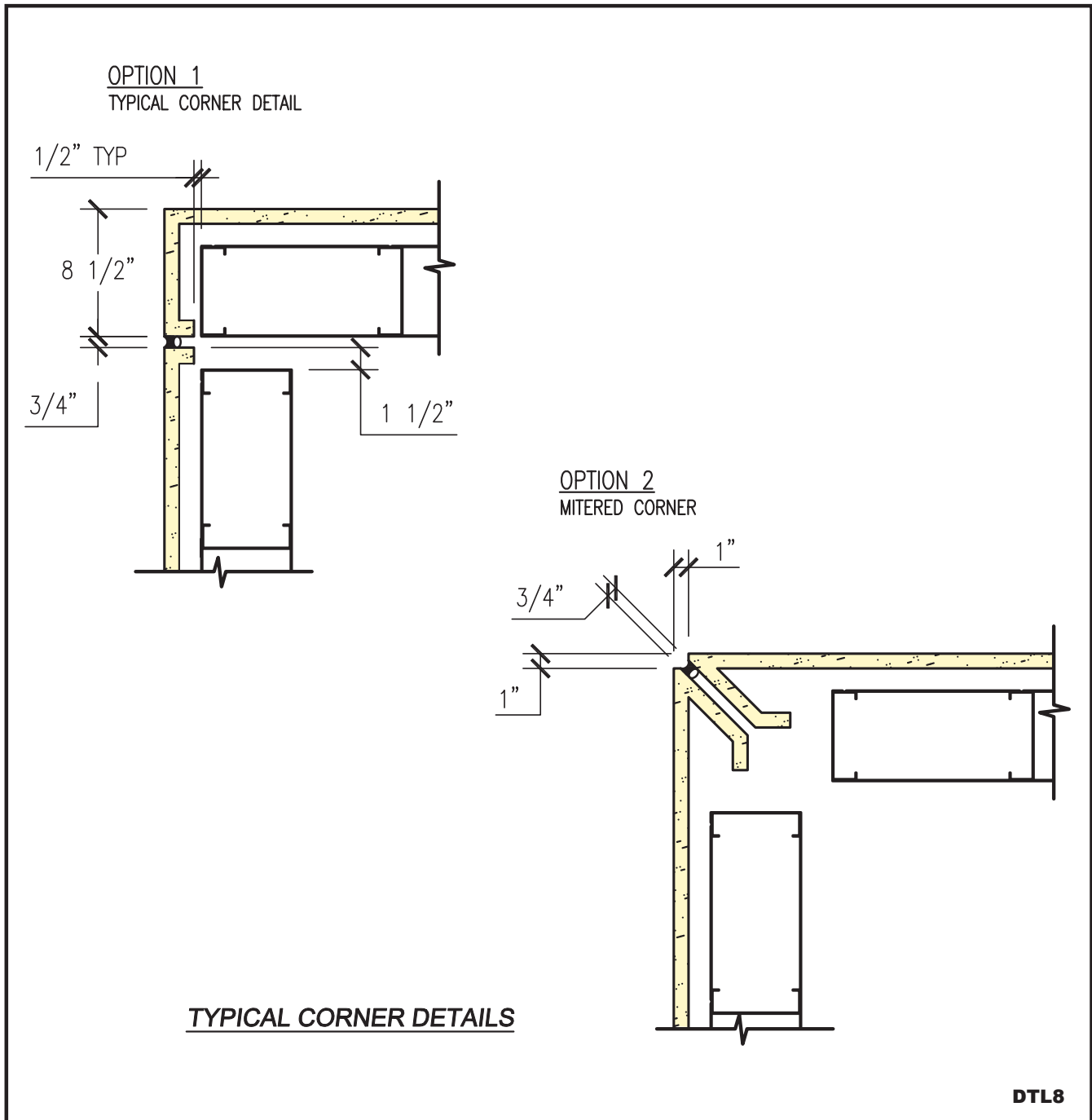
Profiles and Projections on GFRC Panels





GFRC Panels: Corner Details

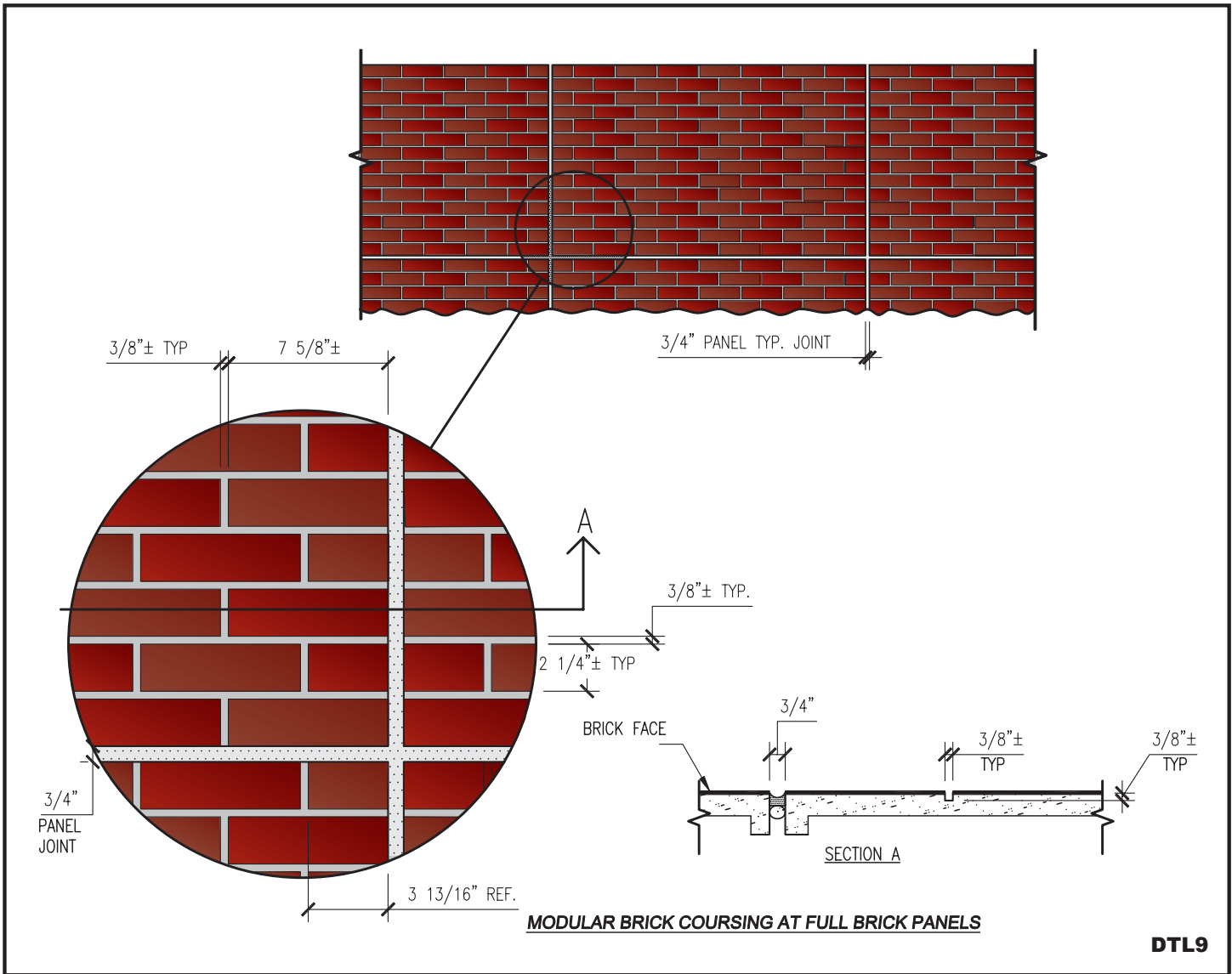
A corner can be either a return, the depth of the panel or a “quirk” miter. “L” shaped panel returns are possible but can create difficulties with shipping and handling





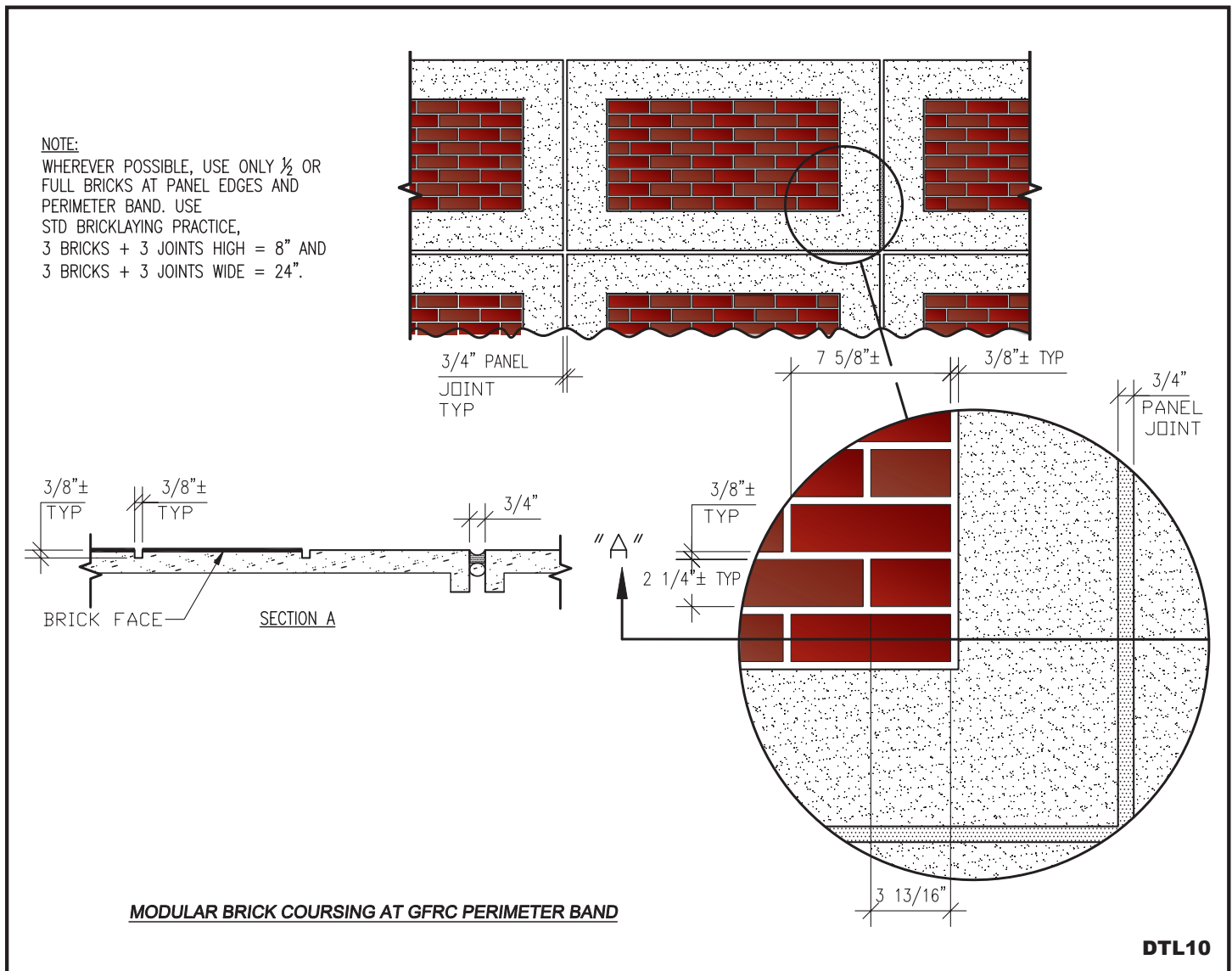
Brick Texture on GFRC Panels

Stromberg GFRC Cladding Panels with brick pattern are available in virtually any color or texture.



Brick "Infill" Panels in GFRC

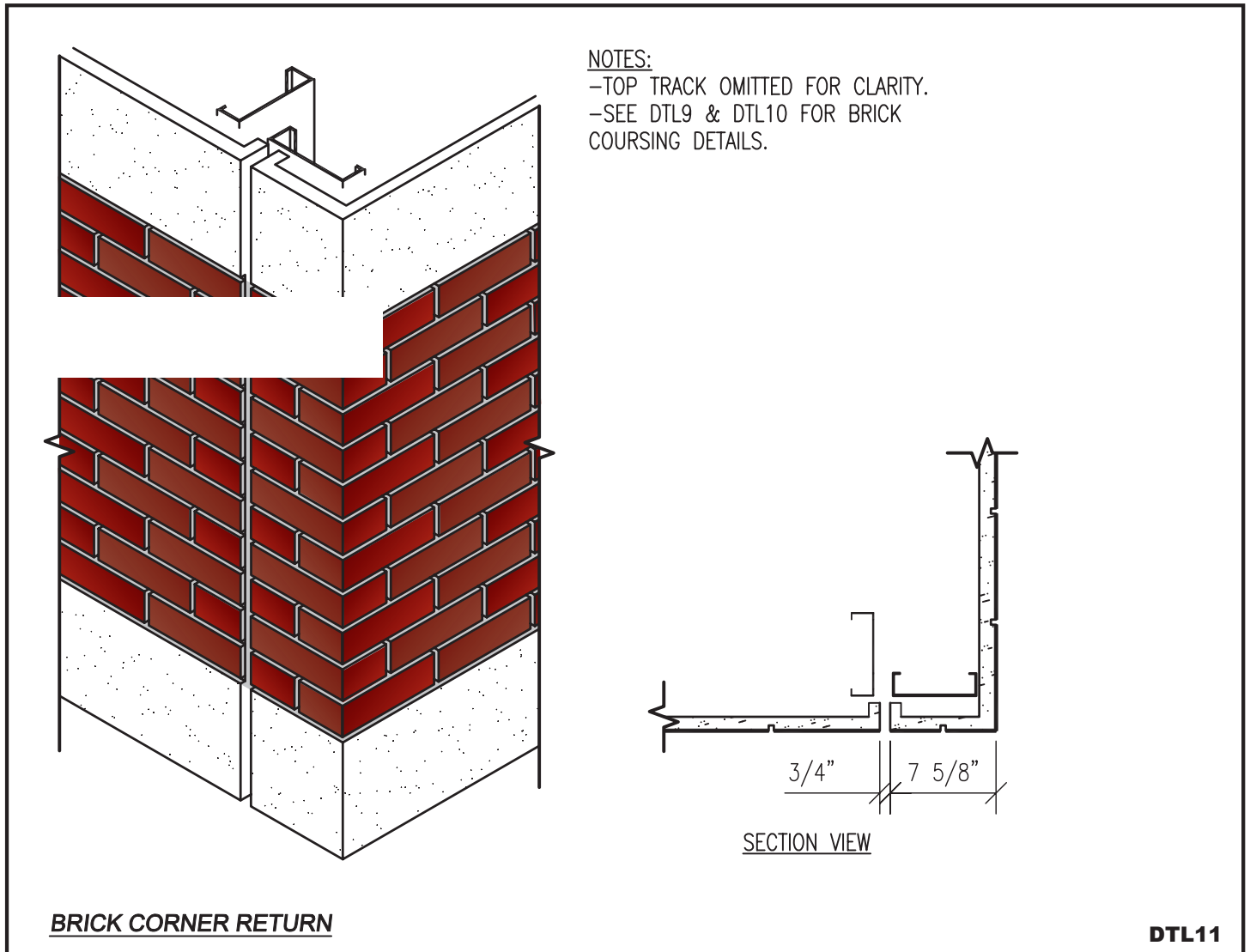
Panels with brick pattern and a smooth perimeter frame. Perimeter can be cast with false joints to simulate a cast stone, cut stone or architectural precast band.





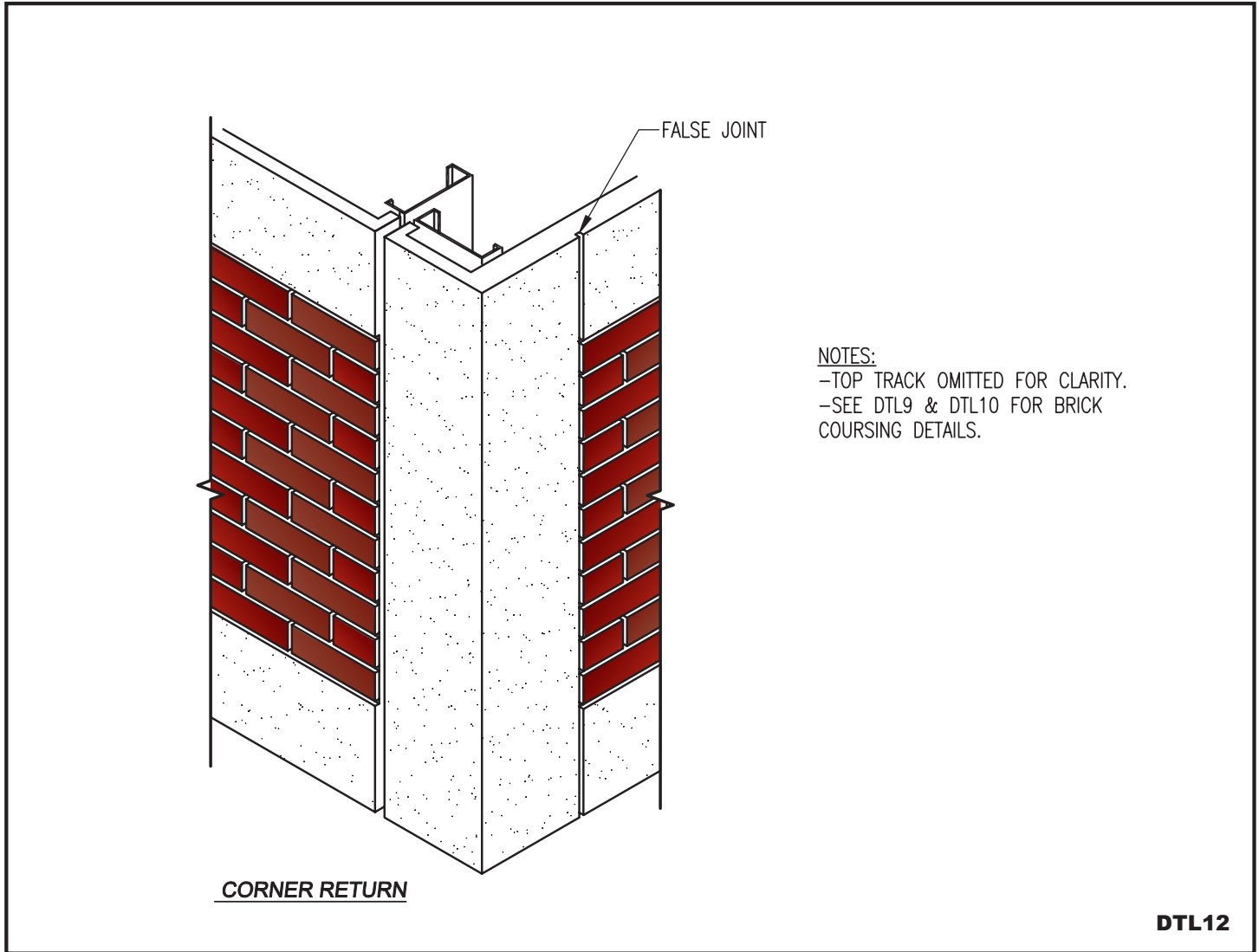
GFRC "Brick" Panel Corner Return

This detail drawing illustrates one method for creating a brick corner return in GFRC. See DTL 12 and 13 for other options.





This detail drawing illustrates a perimeter smooth band “brick” GFRC panel corner. See DTL 11 and 13 for other options.





Brick Texture GFRC Panel

Illustration of a brick texture GFRC panel with a smooth perimeter band.

